



GLCA01E7B



Actual product appearance may vary.

**Global Limit Switches Series GLS:
Wobble - Coil Spring, 1NC 1NO SPDT
Snap Action, 0.5 in - 14NPT conduit**

Features

- Designed to IEC standard for world-wide applications
- UL, CSA, and CE
- International conduit sizes
- Direct PLC interface compatible (two circuit)
- Modular construction reduces maintenance parts costs
- Designed for ease of installation
- Variety of basic switch versions
- Wide choice of actuators

Potential Applications

- Machine tools: metal fabrication equipment, presses, transfer lines and special machinery
- Material handling equipment: conveyors, elevators, cranes, and hoists
- Packaging machinery and process equipment
- Textile machinery
- Construction machinery and equipment, vehicles and lift trucks

Description

The GLS series limit switches are specifically designed for world-wide applications and are supported by Honeywell global resources for sale and after sale service.

Product Specifications	
Availability	Global
Operating Force (O.F.)	1,3 N [0.29 lb]
Pretravel (P.T.)	16°
Differential Travel (D.T.)	10°
Product Type	EN50041/47 Global Limit Switch
Actuator	Wobble - Coil Spring
Lever Style	None
Circuitry	1NC 1NO SPDT Snap Action
Ampere Rating	10 A (Thermal)
Supply Voltage	300 Vac and 250 Vdc max.
Housing Material	Zinc Die-Cast

Termination Type	0.5 in - 14NPT conduit
Housing Type	EN 50047
Series Name	GLS MIN-DIN
Shock	50 g per IEC 68-2-27c (w/o Actuator)
Vibration	10 g per IEC 68-2-6 (w/o Actuator)
Sealing	NEMA 1, 4, 12, 13 IP66
Approvals	UL, CSA, CE
CSA File #	LR94369-3
UL File #	E37138 & E157416
Mechanical Life	5 million
Operating Temperature Range	-25 °C to 85 °C [-13 °F to 185 °F]
Agency Approvals and Standards	IEC 947-5-1, EN60947-5-1, UL508
UNSPSC Code	302119
UNSPSC Commodity	302119 Switches and controls and relays
Sealed	Industrial

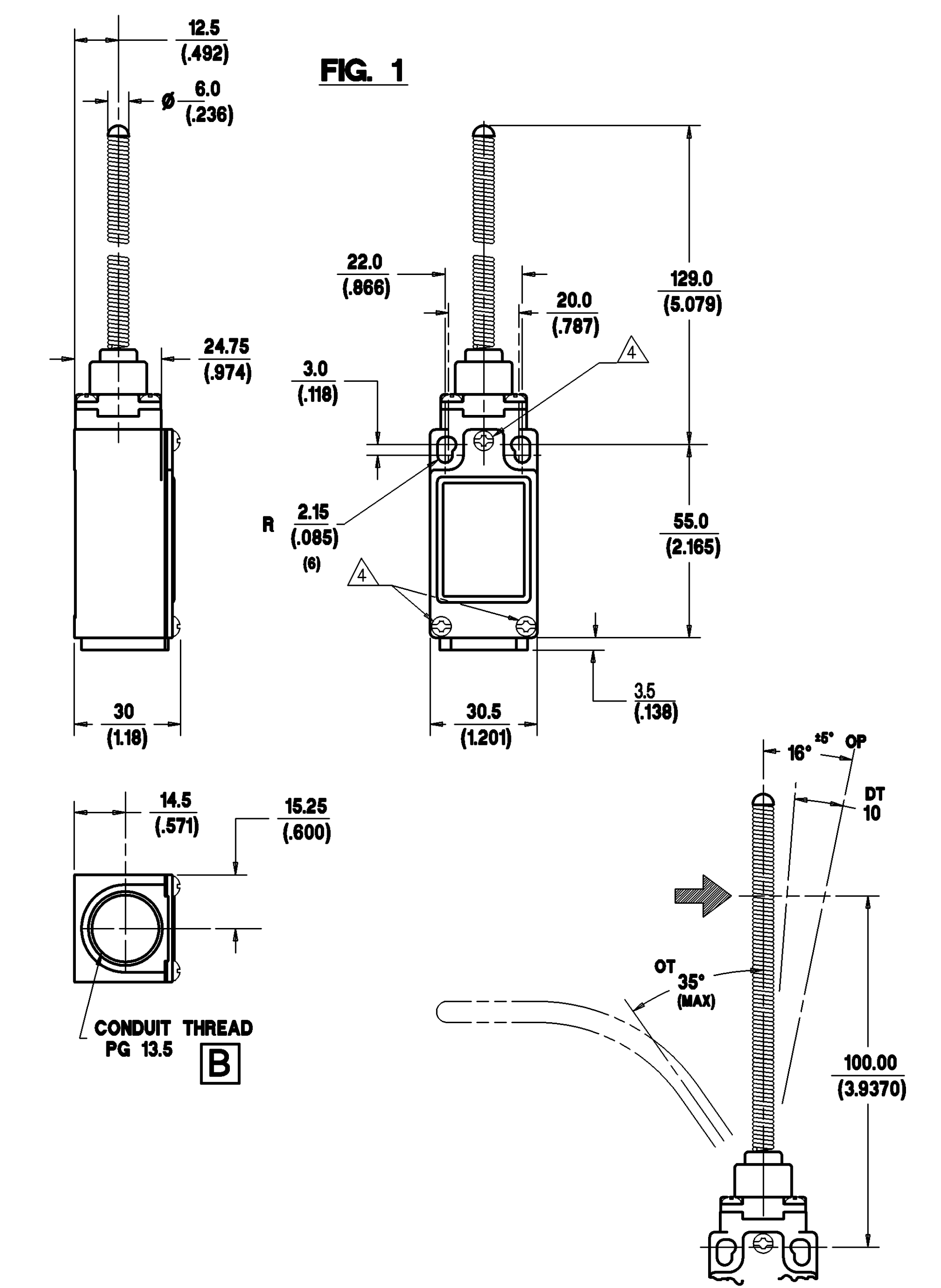
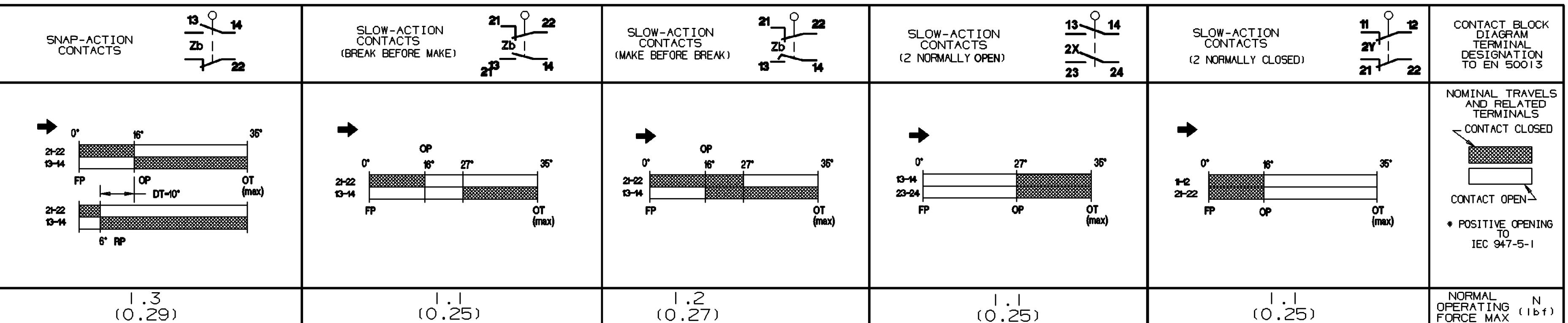
MTG-GL-171

REPLACES
DRAWING NUMBER
AO18-38

REVISIONS
6 9/96
AO18-275
7 12/96
AO18-293
8 7/97
CO-000083
9 CO/395
I WEIR 6/99
10 0030048
MST 23APR07
11 0037216
BS
07FEB08

DRAWN
M. LOCH
3/93
CHECK
I. WEIR
3/93
DESIGN
J. BOYD
3/93
AUTHORIN P. TRICKETT
3/93

Honeywell **LIMIT SWITCH**
CATALOGUE LISTING
GLS
CHART NO.
MTG-GL-171

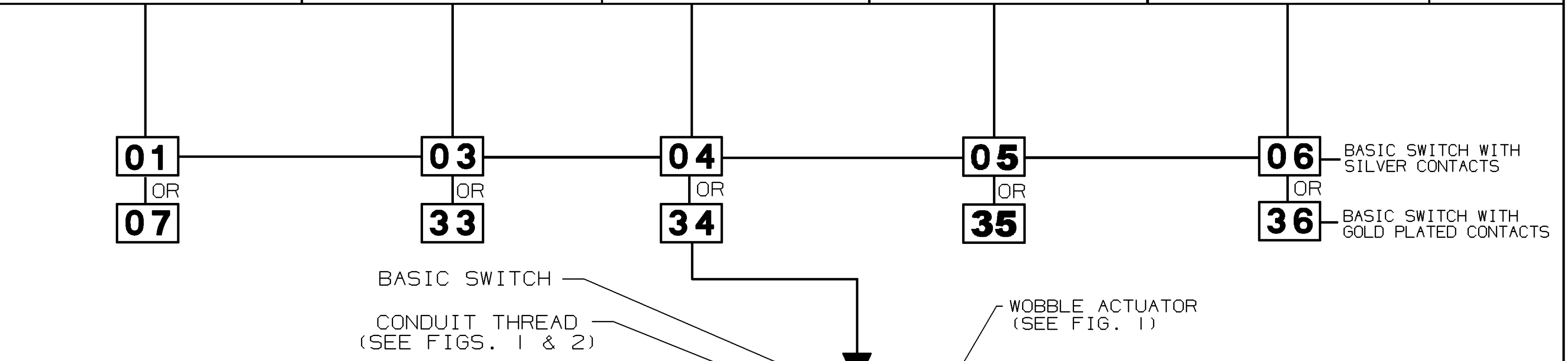


NOTES:-

- ZINC DIECAST BODY AND HEAD WITH STEEL COVER. BODY AND COVER FINISHED IN MICRO SWITCH BLUE EPOXY PAINT. HEAD FINISHED IN BLACK EPOXY PAINT.
- MINIMUM OPERATING VELOCITY (V_{min}) = 0.13 rad/s
MAXIMUM OPERATING VELOCITY (V_{max}) = 13 rad/s
MAXIMUM OPERATING FREQUENCY (F_{max}) = 250 OPS/MIN
- FREE POSITION (FP), OPERATING POINT (OP), OVERTRAVEL (OT) AND PRETRAVEL (PT) ALL TO EN50047.

▲ MAXIMUM TIGHTENING TORQUE FOR FIXING SCREW = 0.5Nm (4.4in.LB)

NO CHANGES CAN BE MADE TO THIS DRAWING WITHOUT JOINT NEWHOUSE/FREEPORT APPROVAL



BASIC SWITCH WITH SILVER CONTACTS
BASIC SWITCH WITH GOLD PLATED CONTACTS

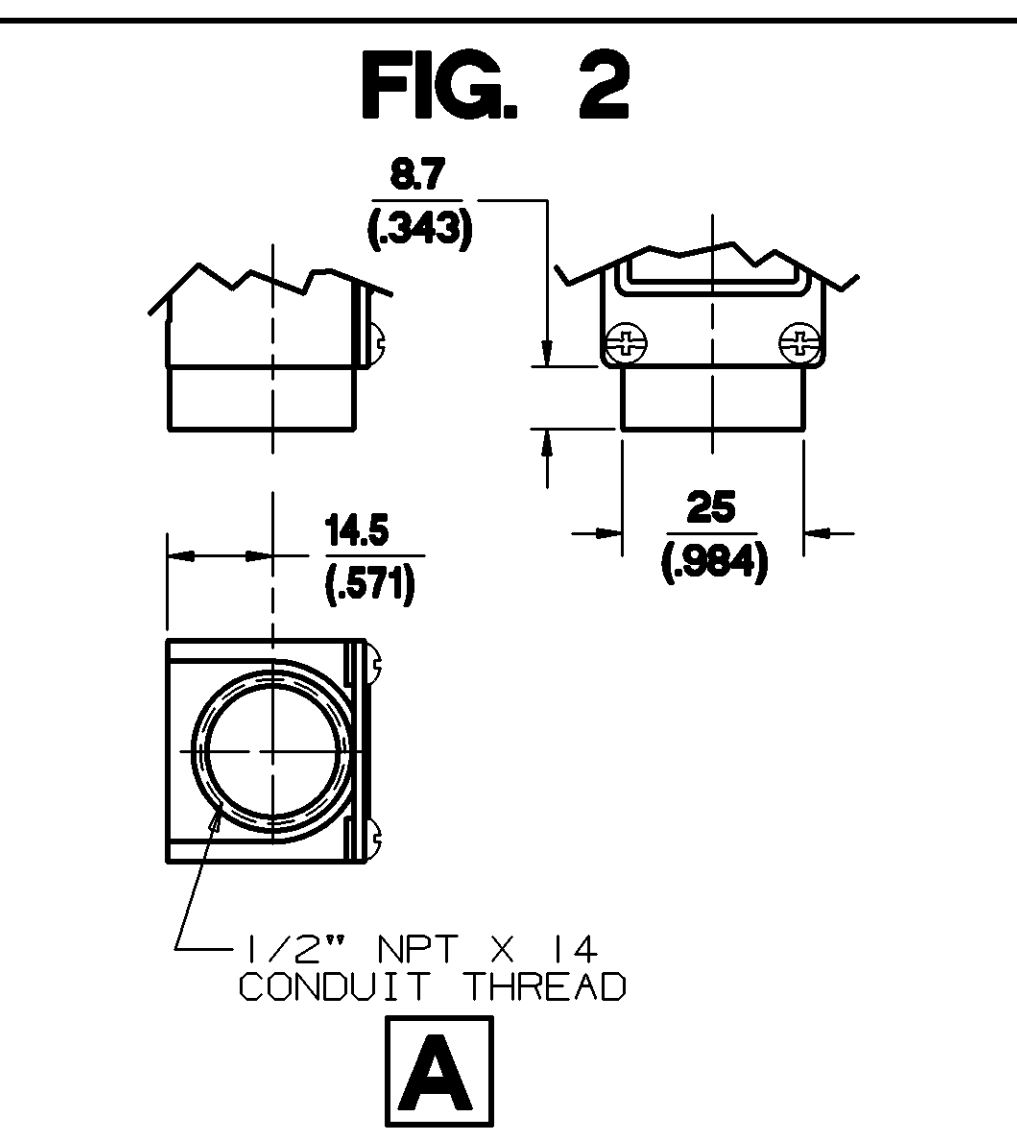
BASIC SWITCH
CONDUIT THREAD (SEE FIGS. 1 & 2)
WOBBLE ACTUATOR (SEE FIG. 1)

EN50047 BODY TYPE (SEE FIG. 1)

1/2" NPT X 14 CONDUIT THREAD → A
PG 13.5 CONDUIT THREAD → B
M20 X 1.5 CONDUIT THREAD → C
PF 1/2 CONDUIT THREAD → D

MODIFICATION CODE
CABLE 5 WIRE WITH GROUND. LAST CHARACTER IS CABLE LENGTH I = 1MTR. CABLE LENGTHS ARE FROM 1 TO 9 METRES. ONLY AVAILABLE WITH CONDUIT THREAD TYPE 'B'.
CONNECTOR .4 PIN MICRO. ONLY AVAILABLE WITH CONDUIT THREAD TYPE 'B'.
CONNECTOR .5 PIN MICRO TWIN KEYWAY. ONLY AVAILABLE WITH CONDUIT THREAD TYPE 'B'.
CONNECTOR .4 PIN MINI. ONLY AVAILABLE WITH CONDUIT THREAD TYPE 'B'.
CONNECTOR .5 PIN MINI. ONLY AVAILABLE WITH CONDUIT THREAD TYPE 'B'.
CONNECTOR .5 PIN MICRO. ONLY AVAILABLE WITH CONDUIT THREAD TYPE 'B'.

NOTE:-
ANY STANDARD LISTING WITH SUFFIX 'RS' OR 'FE' IS PERMITTED.



STANDARD SILVER CONTACTS		GOLD PLATED CONTACTS		ENVIRONMENTAL	APPROVALS
ELECTRICAL RATING		ELECTRICAL RATING			
AC	DC			IP66 NEMA 1, 4, 12, 13 TEMP RANGE : -25°C TO 85°C -13°F TO 185°F STORAGE : -40°C TO 85°C -40°F TO 185°F SHOCK : 50G PER IEC 68-2-27 VIBRATION : 10G PER IEC 68-2-6	UL IEC 947-5-1 EN50047
A300 AC15 Ue Ie	0300 DC13 Ue Ie	I _{th} = 10A			
VOLTS AMPS 120 6 240 3	VOLTS AMPS 125 0.55 250 0.27	1V 10µA MIN. 50V 100mA MAX.			

SCALE DIMENSIONS ARE IN MM/INCHES. MODIFY ON CAD SYSTEM ONLY

NOTE:
FOR CONNECTION DIAGRAMS AND ADDITIONAL ELECTRICAL, ENVIRONMENTAL & DIMENSIONAL INFORMATION SEE DRAWING GL-49212.